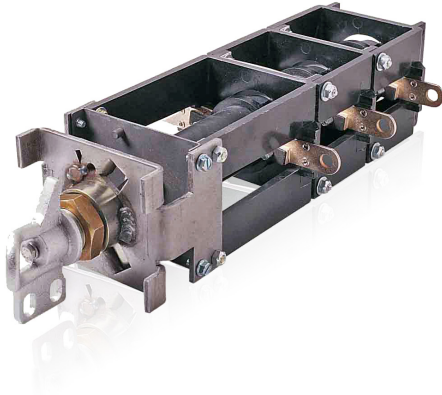


# Switches



The ABB LBOR-II switch is a manually operated, two position, load make or break, oil immersed, rotary switch. It is designed for use with distribution transformers (pad-mounted or submersible) and self contained distribution switchgear.

With a smaller mounting envelope than most switches on the market today, the LBOR-II switch has been designed to save you money. The reduced envelope allows for smaller equipment that requires less oil and steel to manufacture.

ABB LBOR II switches feature a wide range of configurations. To select a switch, please refer to the tables below and locate the appropriate ratings, then select a style number for the required mounting configuration. If interlock hardware kits are required for a nut mount switch, please order the suitable style without hardware and add the interlock hardware kit, style 3A33949G02.

For non-standard configuration options that are not listed in these tables, please contact your ABB representative.

## LBOR-II ordering information

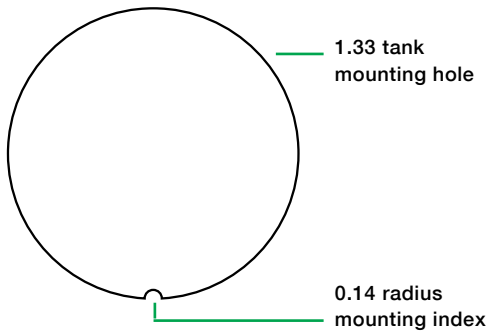
One deck				Style numbers				
Continuous current (A)	BIL (kV)	Maximum voltage (L-G kV)	Mounting orientation	Weld-in without hardware	Weld-in with standard hardware	Weld-in with interlock hardware	Nut mounting with hardware	Nut mounting without hardware
300	95	8.9	Wall	272D914G01	272D914G11	272D914G14	L095NC3001	L095JC3001
300	150	21.9	Wall/Cover	272D913G01	272D913G11	272D913G14	L150NC3001	L150JC3001
400	150	15.5	Wall/Cover	272D923G01	272D923G11	272D923G14	L150NC4001	L150JC4001

Two deck				Style numbers				
Continuous Current (A)	BIL (kV)	Maximum voltage (L-G kV)	Mounting orientation	Weld-in without hardware	Weld-in with standard hardware	Weld-in with interlock hardware	Nut mounting with hardware	Nut mounting without hardware
300	95	8.9	Wall	272D914G02	272D914G12	272D914G15	L095NC3002	L095JC3002
300	150	21.9	Wall/Cover	272D913G02	272D913G12	272D913G15	L150NC3002	L150JC3002
400	150	15.5	Wall/Cover	272D923G02	272D923G12	272D923G15	L150NC4002	L150JC4002

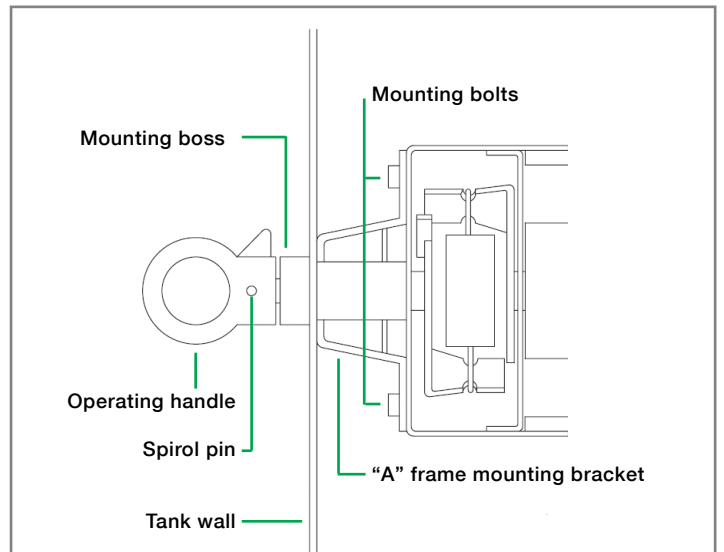
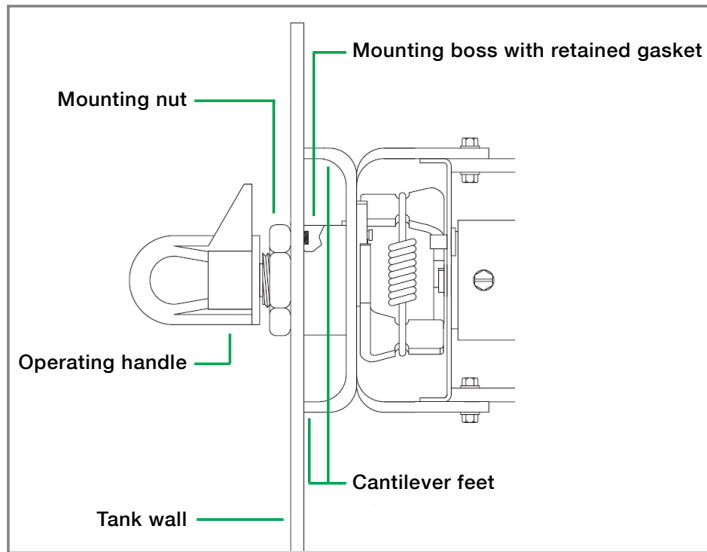
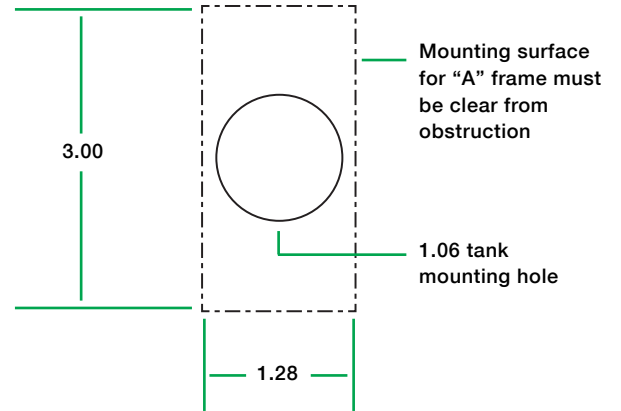
Three deck				Style numbers				
Continuous current (A)	BIL (kV)	Maximum voltage (L-L kV)	Mounting orientation	Weld-in without hardware	Weld-in with standard hardware	Weld-in with interlock hardware	Nut mounting with hardware	Nut mounting without hardware
300	95	15.5 Grd-Y	Wall	272D914G03	272D914G13	272D914G16	L095NC3003	L095JC3003
300	150*	38 Grd-Y	Wall/Cover	272D913G03	272D913G13	272D913G16	L150NC3003	L150JC3003
400	150*	27 Grd-Y	Wall/Cover	272D923G03	272D923G13	272D923G16	L150NC4003	L150JC4003

\* Per IEC 265-1 the BIL rating for these styles is 180 kV

**LBOR nut mounting**



**LBOR weld-in mounting**



\* Dimensions are presented in inches